



Via Pierino Colombo, 3
20871 Vimercate (MB) - ITALY
Tel. +39 039 6080924 - +39 039 6851488
www.avmicrolab.it

OrthoTP Rocabado

OrthoTP Rocabado

The TMJ evaluation in OrthoTP

Direct collaboration with Prof. Rocabado, has allowed us to have, within our OrthoTP software, the module containing its evaluation folder TMJ, UNIQUE in the world.



TMJ EVALUATION FOLDER

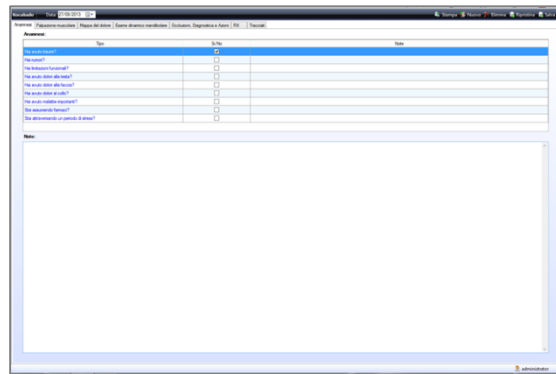
The folder is spread divided into distinct sections organized following a patient visit protocol, following the step - step by step all of the TMJ assessment. This software is essential to the clinician for the objectification of the visit and how to assess the progress of treatment, and, in the aspect coroner, is a real medical record in which they are collected not only the basic clinical information but also images and patient tracked useful to build the clinical history and treatment.

NEW OrthoTP



HISTORY

The history according Rocabado is essential for the investigation of TMJ dysfunction. And 'it presents a wide field for the insertion of additional notes.

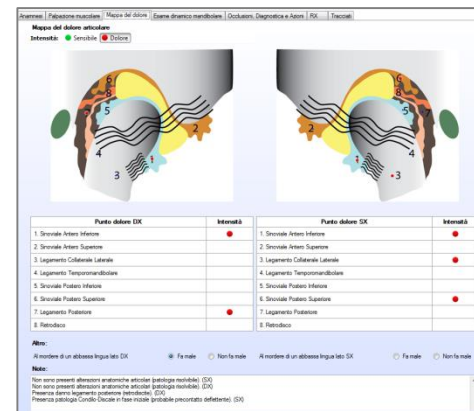


MUSCULAR PALPATION

In the section of the palpation of muscles is possible to record the major muscles of the head is the pain evoked that shown and the relative intensity on the basis of language Rocabado graphically, through a colored marker depending on the intensity and an associated "Post-It" for Additional notes for every single point. The display of inserted pain points has a double vision: graphical and tabular for easier interpretation. The section allows you to record ligamentous laxity, clinical examination related to the mandibular movements, the situation of the facial muscles and so on. And 'present a clear field notes.

MAP OF PAIN WITH AUTOMATIC SUMMARY

This section is the heart of the folder where you can record what is detected during palpation of the eight pain points defined by Rocabado and according to a specific technique which he taught. The insertion can be performed on the image that is in the table below, producing automatically the corresponding clinical significance which is displayed in a special field in which notes can be extended the final diagnosis by the clinical.

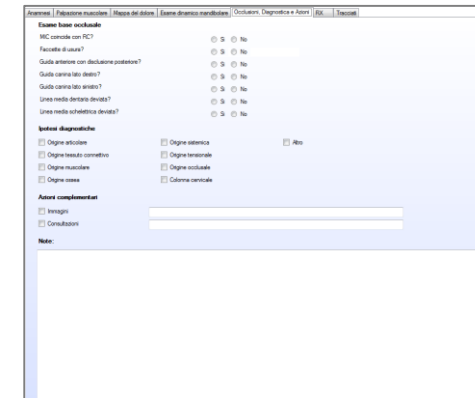


MANDIBULAR DYNAMIC ANALYSIS

In this section you can be inserted on an appropriate chart millimeter entities of the movements of protrusive, lateral right and left, and the maximum opening in addition to other clinical information of the low pressure dynamic performed on the level of gonial. The program proceeds to calculate the ratio between the lateral and the maximum opening in physiology that is 1/4.

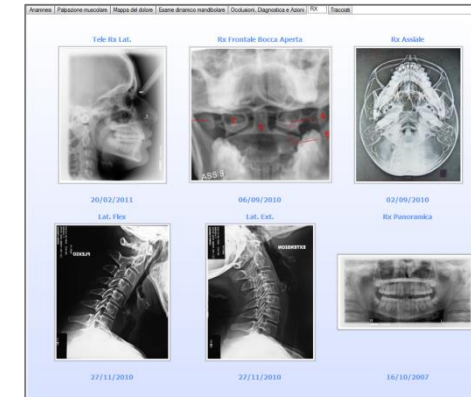
OCCCLUSION, DIAGNOSIS AND ADDITIONAL ACTIONS

This section included occlusal evaluations (MIC, RC, canine tooth relationship etc.), The diagnostic hypotheses and complementary actions. A wide field notes allows you to freely add all that the clinician wants.



RX

In this section you enter all the x-rays in the projections useful to orthodontic evaluations



CEPHALOMETRY

Folder cephalometric examinations to the patient

